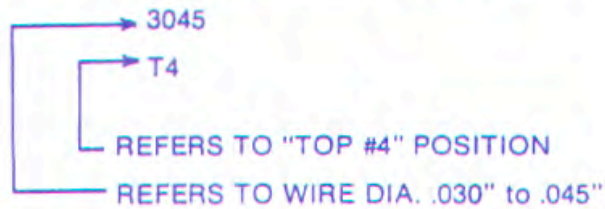


DIE CODING AND DIE INSTALLATION

EXAMPLE:

A DIMPLING DIE MARKED SUCH

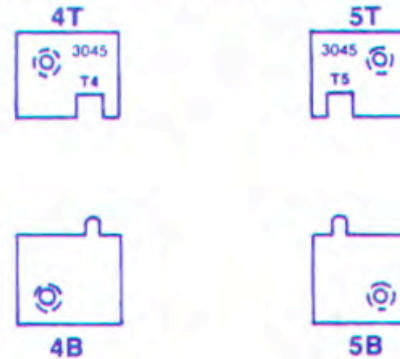


1530 REFERS TO .015 to .030" WIRE DIA.

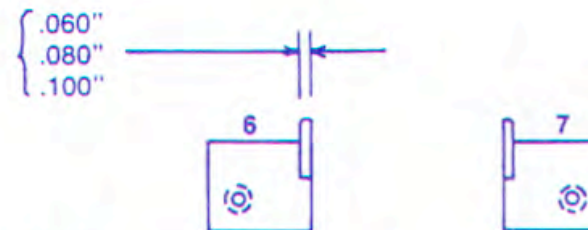
3045 REFERS TO .030 to .045" WIRE DIA.

4564 REFERS TO .045 to .064" WIRE DIA.

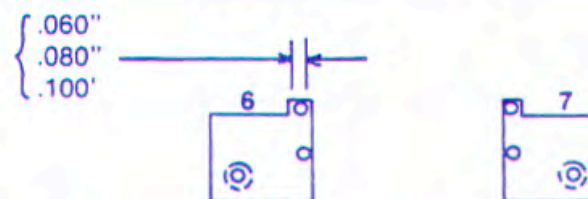
FACING THE MACHINE WITH THE POWER SUPPLY FACING YOU, DIES ARE INSTALLED AS FOLLOWS:



REFERS TO DIE ANVIL WIDTH
HORIZONTAL 90° BENDS
(ALWAYS USE IN PAIRS)



REFERS TO PIN DIAMETER
DOUBLE PIN DIES ARE FOR STAND OFF
OR LOCK IN LEADS
(CLOSE TO BOARD)



REFERS TO PIN DIAMETER
SINGLE PIN DIE IS FOR VERTICAL
COMPONENTS

